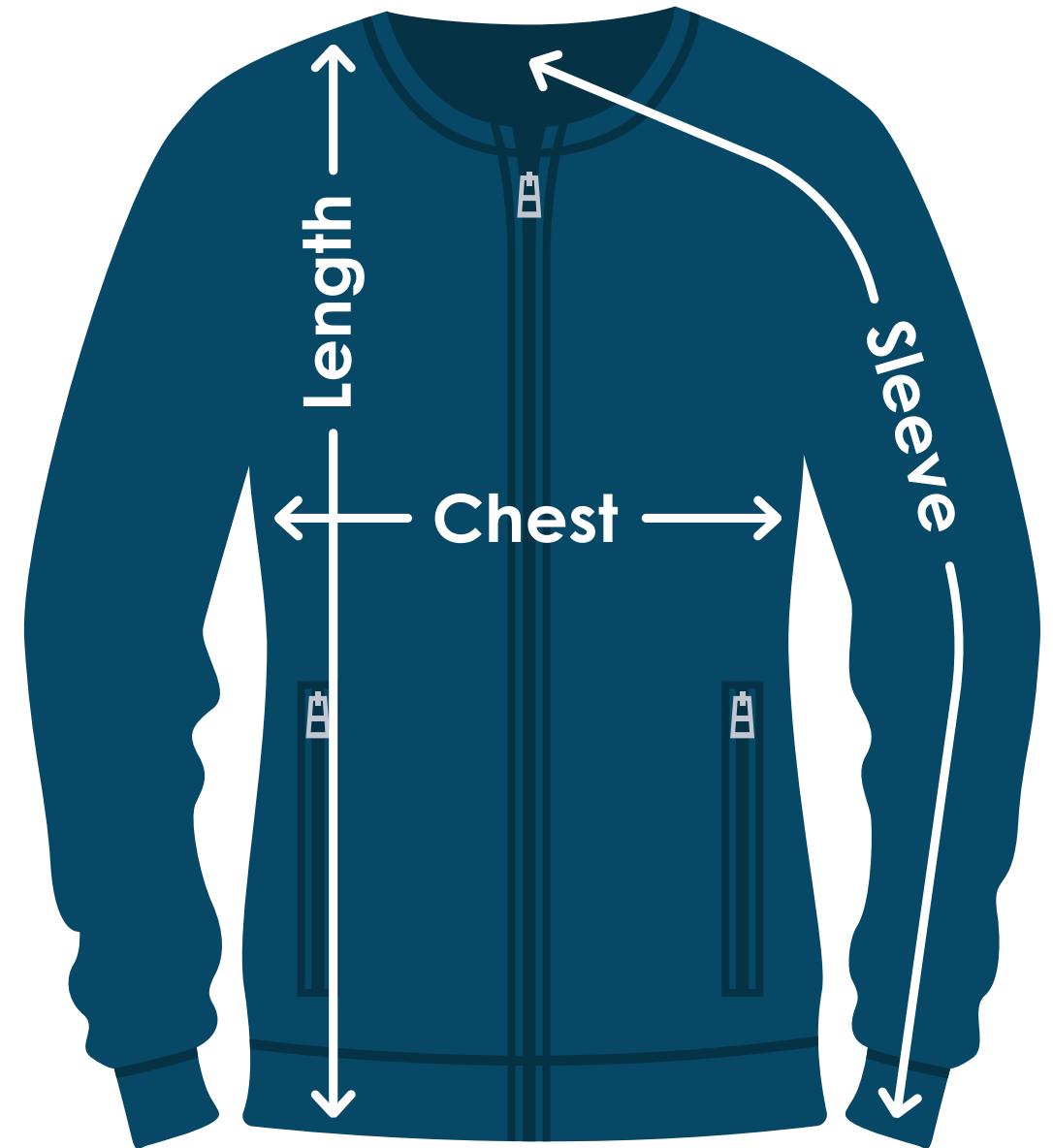


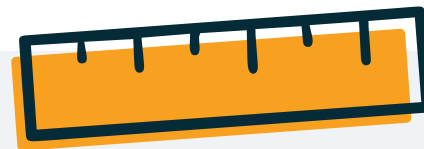
New Era® Ladies' French Terry Baseball Full-Zip

TA589 | TA589FD | TA589E

Size	Chest	Sleeves	Length
XS	18"	32"	26-1/4"
S	19"	32-1/2"	26-3/4"
M	20"	33"	27-1/4"
L	21-1/2"	33-5/8"	27-3/4"
XL	23"	34-1/4"	28-1/4"
2XL	24-1/2"	34-7/8"	28-3/4"
3XL	26-1/2"	35-1/4"	29-1/4"
4XL	28-1/2"	35-5/8"	29-3/4"



Fit: Form-fitting



Measuring Tips

Chest:

Measured across the chest one inch below armhole when laid flat.

Sleeves:

Measured from center back neck, down shoulder to finished sleeve hem.

Length:

Measured from high point of shoulder to finished hem at back.