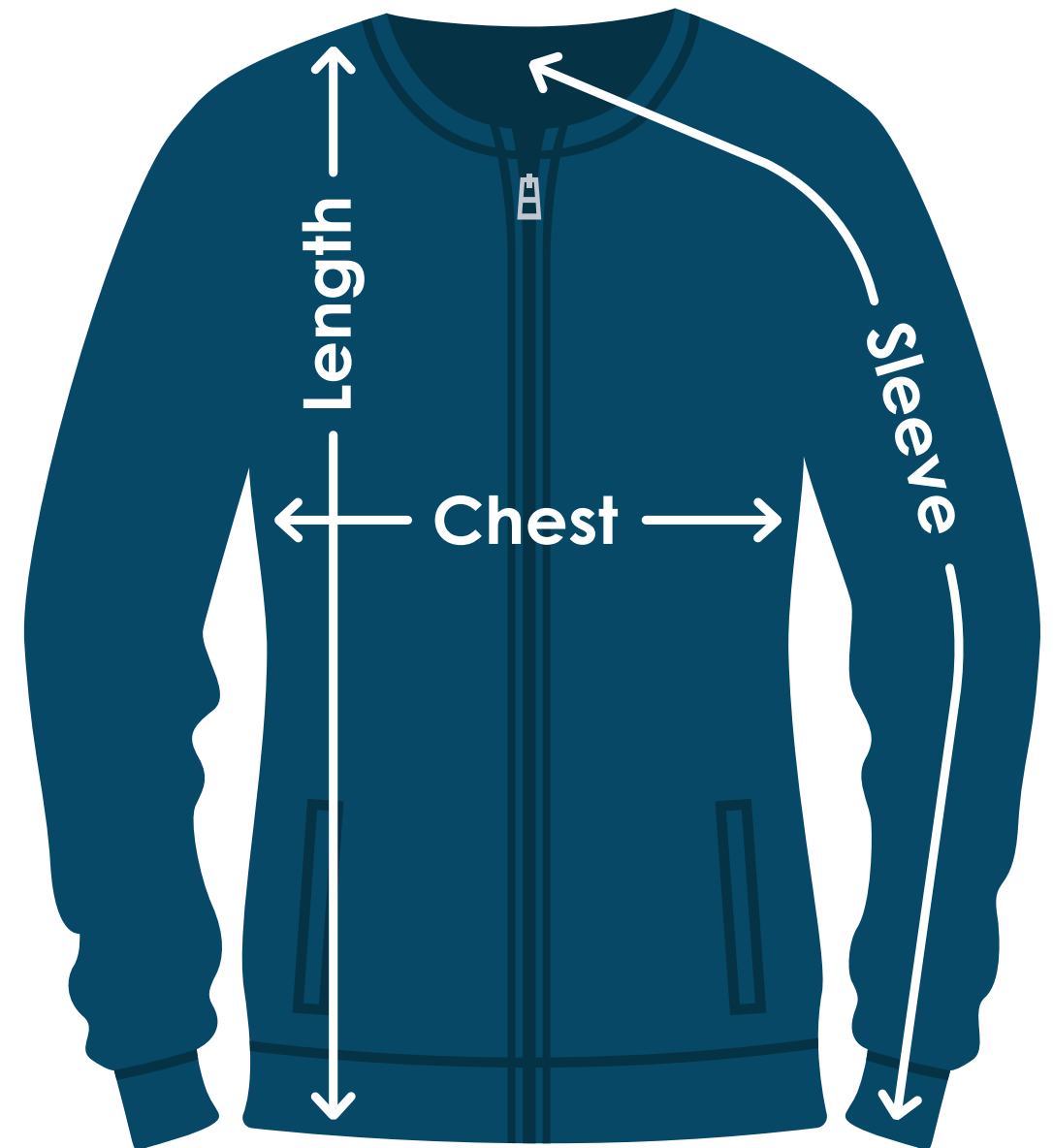


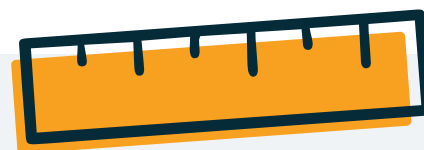
OGIO® Ladies' Hinge Full-Zip

TA597 | TA597FD | TA597E

Size	Chest	Sleeves	Length
XS	18"	32"	24"
S	19"	32-1/2"	24-1/2"
M	20"	33"	25"
L	21-1/2"	33-5/8"	25-1/2"
XL	23"	34-1/4"	26"
2XL	24-1/2"	34-7/8"	26-1/2"
3XL	26-1/2"	35-1/4"	27"
4XL	28-1/2"	35-5/8"	27-1/2"



Fit: Ladies'



Measuring Tips

Chest:

Measured across the chest one inch below armhole when laid flat.

Sleeves:

Measured from center back neck, down shoulder to finished sleeve hem.

Length:

Measured from high point of shoulder to finished hem at back.