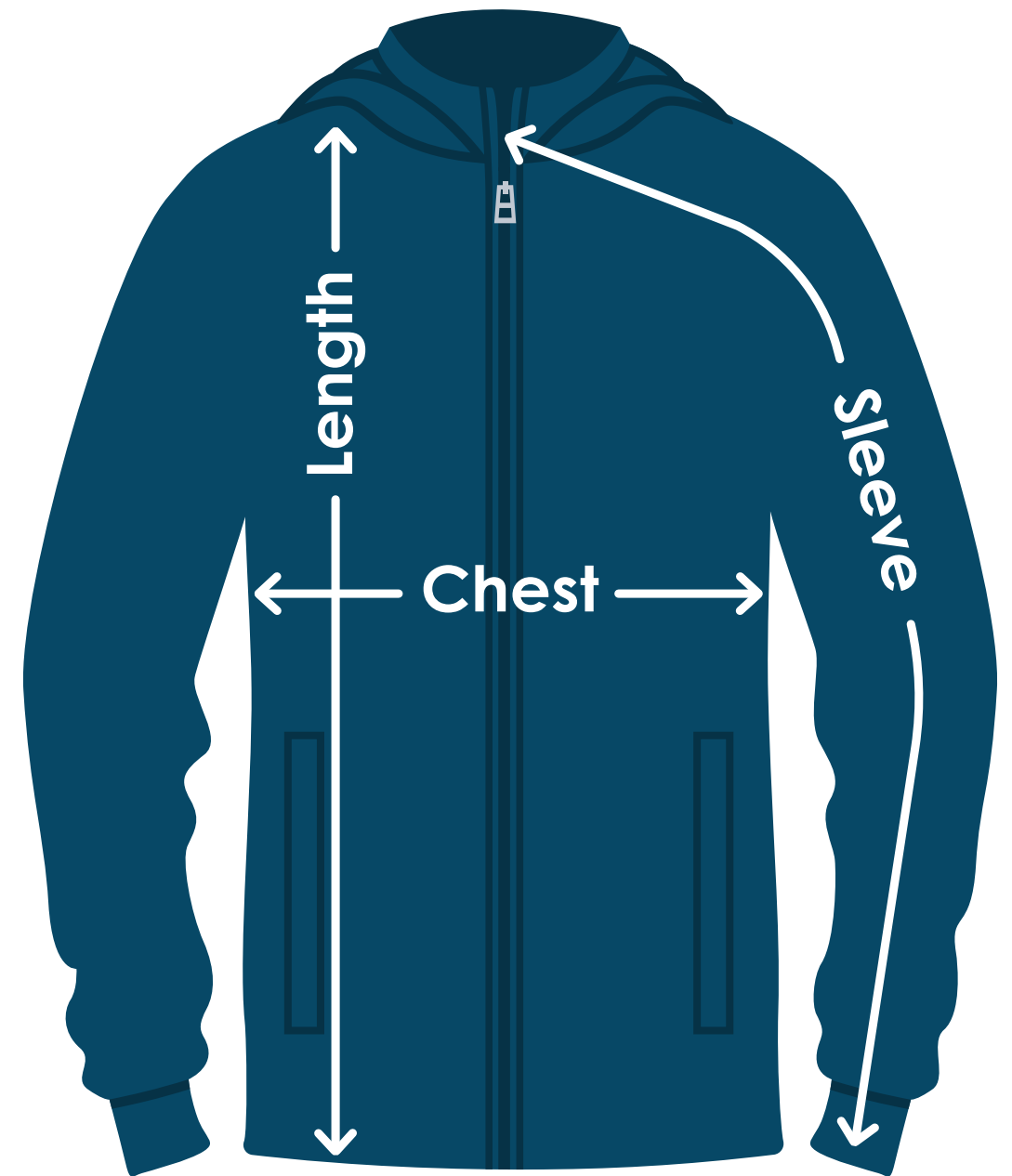


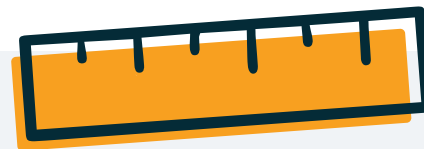
North End® Ladies' Techno Lite Jacket

TA750 | TA750FD | TA750B | TA750E

Size	Chest	Sleeves	Length
XS	19"	31-1/2"	25-1/2"
S	20-1/2"	32-1/4"	26"
M	22"	33"	26-1/2"
L	23-1/2"	33-3/4"	27"
XL	25"	34-1/2"	27-1/2"
2XL	26-1/2"	35-1/4"	28"
3XL	28"	35-3/4"	28-1/2"
X	X	X	X



Fit: Ladies'



Measuring Tips

Chest:

Measured across the chest one inch below armhole when laid flat.

Sleeves:

Measured from center back neck, down shoulder to finished sleeve hem.

Length:

Measured from high point of shoulder to finished hem at back.