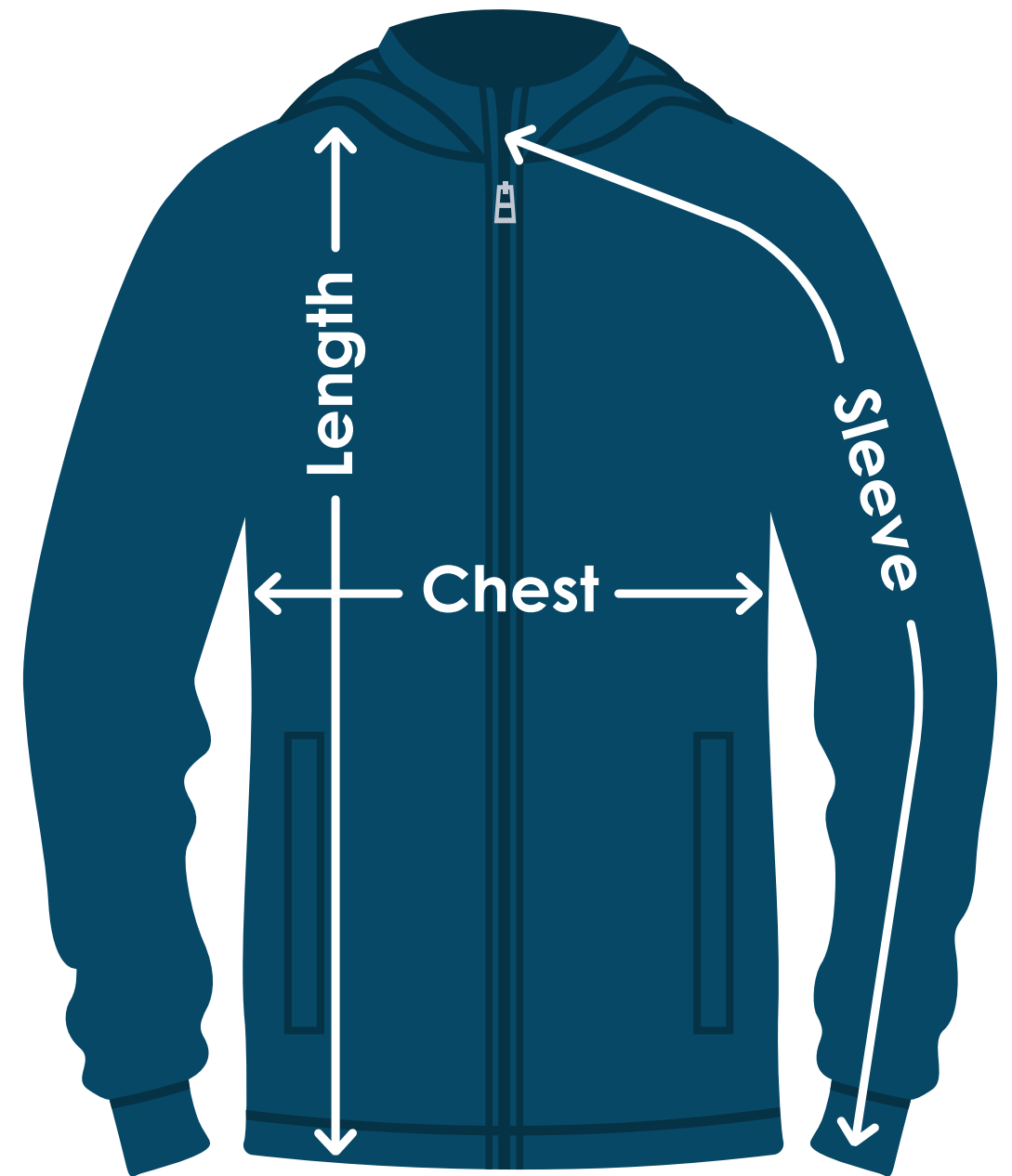


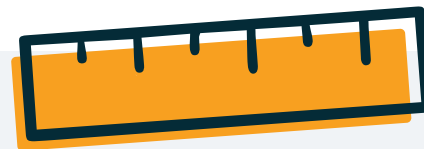
Cutter & Buck® Charter Eco Recycled Women's Full-Zip Jacket

TA757 | TA757FD | TA757B | TA757E

Size	Chest	Sleeves	Length
XS (2)	17"	X	X
S (4/6)	17-3/4"	X	X
M (8/10)	18-3/4"	X	X
L (12/14)	20-1/8"	X	X
XL (16/18)	21-3/4"	X	X
2XL (20/22)	23"	X	X
3XL (24/26)	23-3/4"	X	X
X	X	X	X



Fit: Ladies'



Measuring Tips

Chest:

Measured across the chest one inch below armhole when laid flat.

Sleeves:

Measured from center back neck, down shoulder to finished sleeve hem.

Length:

Measured from high point of shoulder to finished hem at back.

Sizes:

The measurements featured above include estimated average sizes.